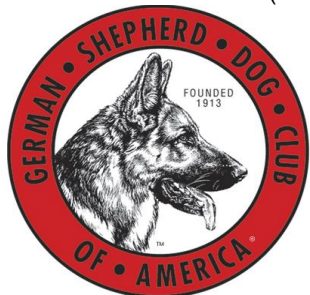


CATALOGS (Only covers THR & FRI Agility)



Keep a part of the experience alive by pre-ordering a GSDCA Agility Catalog in advance. Keep track of scores, look up a dog's information or just hold onto it as a keepsake.

To pre-order please include \$10.00 (separately from your entry) and this form with your entry.

Name: \_\_\_\_\_

Phone: \_\_\_\_\_

Email: \_\_\_\_\_

Dogs Name: \_\_\_\_\_

A very limited number of catalogs will be available for sale during the trial for \$15.00 each.

Request for Workers for the GSDCA Agility Trials

We need your HELP for a Successful Nationals! GSDCA will be offering a fantastic workers' raffle!

If you are available to help, please fill out this form and return it with your entry. There will be an online sign-up closer to the trial.

Name: \_\_\_\_\_ Phone #: \_\_\_\_\_

E-Mail: \_\_\_\_\_

I can help on:

THURSDAY: \_\_\_\_\_ FRIDAY: \_\_\_\_\_

I can help with the following jobs (circle all that apply):

- |              |           |              |
|--------------|-----------|--------------|
| Timer        | Scribe    | Gate         |
| Leash Runner | Ring Crew | Score Runner |

Classes Available to work

\_\_\_\_\_  
\_\_\_\_\_

Entries Open on Tues., Aug. 6, 2024 at 8am EST on a **FIRST RECEIVED** basis at the PO Box address only. All entries received before this date will be returned.

Entries Close on Tuesday, Sept. 26, 2024 at 6pm EST.

\*Please write **GSDCA Nationals** on the outside of your envelope\*

All Overnight mail must be sent via **USPS**.

Be sure to check **AND** sign the "No Signature Required" waiver or your entry **will not** be accepted. Maximum of 10 entries per envelope.

\*\*\* Also accepting **AKC Online Entries** - See inside for more details

## German Shepherd Dog Club of America

Member of the American Kennel Club  
Premium List for Two AKC All Breed Agility Trials  
(Event # 2024009317 – 2024009318)

This Event is Accepting Entries for Dogs Listed in the AKC Canine Partners Program

For Exhibition Only (FEO) Option for all classes



# October 10- 11, 2024

**INDOORS ON DIRT \* Climate controlled**

**Rubberized Contact**

One Ring 90' x 120'

THURSDAY: All levels of **STD, JWW, FAST & T2B** plus **Premier STD**

FRIDAY: All levels of **STD, JWW, FAST & T2B** plus **Premier JWW**

**Judge: Sherry Spivey**

350 runs per day

**Reno-Sparks Livestock Event Center**

1350 N Wells Ave, Reno, NV 89512

Trial Hours: 7am to 7pm

Judging Starts at 8am both days

**Website: GoneDogginAgility.com**



**American Kennel Club Certification**

Permission is granted by the American Kennel Club for the holding of this event under the American Kennel Club Rules and Regulations.

Gina DiNardo, Executive Secretary

## ENTRY FEES

**\$25 / \$20 / \$15 / \$15 / \$15** (1<sup>st</sup> / 2<sup>nd</sup> / 3<sup>rd</sup> / 4<sup>th</sup> / 5<sup>th</sup> entry per dog/per day)

(Fees include AKC recording fee of \$3.50 per run/per dog/per day)

\*\*\* MAKE checks payable to: **GSDCA** \*\*\*

### YOU CAN ENTER VIA AKC's ONLINE ENTRY SERVICES

Go to the AKC Agility Online Entry Services home page at [www.akc.org/AgilityEntry](http://www.akc.org/AgilityEntry) and follow the instructions there to use your My AKC account to enter this event online.

During the first 48 hours after opening, the initial limit of entries designated as either online or paper will be as follows: 87 runs online and 263 runs paper entries. If either form of entry has not filled at the end of the 48 hour time period, the club reserves the right to decrease or increase either one accordingly.

## TRIAL SECRETARY

[www.GoneDogginAgility.com](http://www.GoneDogginAgility.com)

Laurene Galgano ..... PO Box 3070, Virginia Beach, VA 23454

E-Mail: [GoneDoggin@cox.net](mailto:GoneDoggin@cox.net) ..... (757) 481-4854

### Wait List for Withdrawn Entries after Closing

GSDCA is offering a Wait List to fill openings created by withdrawn entries after the trial's closing on Sept 26, 2024. A maximum of 20 entries will be placed on the wait list. All entries, including wait listed entries, must be received by the Trial Secretary prior to the trial closing date. Any entries withdrawn that are received by Friday, Oct. 4, 2024 @ 6pm will be replaced by a wait listed entry if any are available. If a withdrawn entry is replaced by a wait listed entry, a full refund will be issued for the withdrawn entry. Any wait listed entry that does not move off the wait list into the trial by Friday, Oct. 4, 2024 @ 6pm will receive a full refund.

**If you have not heard about your Wait List status by Mon. Oct. 7th, contact us ASAP!**

### German Shepherd Club of America Officers

Cynthia E Flautt, *President*

Ileana Norqueras, *Vice President*

Ms. Pamela J O'Dell, *Treasurer*

Gail Stiefferman, *Corresponding Secretary* ..... 9500 Rainbow Acres, Dittmer, MO 63023

Candee R Foss, *Recording Secretary*

Dr. Carmen L Battaglia, *AKC Delegate*

### Board of Directors

Class of 2024: Lenny Brown, Donna Calabrese, Mary Gattone, Wilhelm Lipp

Class of 2025: John Conely, Julie Degen, Erin Nellis, Dawn VanDyken

### Trial Chairman

Dawn VanDyken ..... 10535 88th Ave, Allendale, MI 49401

[drvandyken@gmail.com](mailto:drvandyken@gmail.com) 616-299-7778

### GSDCA AGILITY EVENT COMMITTEE

Julie Degen  
Cathy Lester  
Bill Long

Dawn VanDyken  
Ann Newell  
GSDCA Club Officers

Amanda Piala  
Karen McKee

## JUDGE

Sherry Spivey #106107 .....822 Cindy Dr., Cookeville, TN 38506

## ENTRY INFORMATION

- Make checks payable to "GSDCA" and mail to Trial Secretary address **ONLY**.
- Overnight service (USPS only) **MUST** check **AND** sign the "NO SIGNATURE REQUIRED" waiver box, as the Trial Secretary will not be present to sign for your entries. Paper entries received within the first 24 hours must include postage or be metered.
- Be sure to include the correct fees. Overpayments less than \$10 will not be refunded.
- All entries must be submitted on official AKC agility entry forms. Photocopies of front & back will be accepted only if legible and official AKC size. Entries will not be accepted without signature, back of entry form with agreement, and fees, nor will telephone, email, or FAX entries will be accepted.
- **Owners are responsible for ensuring that entry forms are completed IN FULL.** Entries submitted without ALL information will be returned as invalid. Entries which are illegible, incomplete, conditional, or received with insufficient fees will not be accepted.
- Returned checks do not constitute a valid entry. A \$30.00 service fee will be added for all returned checks.
- A maximum of ten entries per envelope is allowed. Envelopes with more than the ten dog maximum shall be treated as an invalid entry and shall be returned to the sender.
- **GSDCA DOES NOT AGREE TO ARBITRATE CLAIMS AS SET FORTH ON THE OFFICIAL AKC ENTRY FORM FOR THIS EVENT**

### PLEASE CHECK YOUR ENTRIES CAREFULLY!

## CONFIRMATIONS

- Confirmations will be sent via US mail **ONLY** if an exhibitor does not have an active e-mail address or upon specific request.
- A Preliminary Confirmation will be sent to the e-mail address on the AKC entry form after your entry has been processed. Please review the information in the confirmation for input errors and notify the Trial Secretary of any corrections.
- **Contact us if you do not receive a preliminary confirmation before the closing date!**
- Final confirmations of entry and judging schedule will be sent to the e-mail address on the AKC form after the closing date.

**NOTE:** If the exhibitor has not received the Final Confirmation within five days of the trial, please contact the Trial Secretary.

**We answer all correspondence and acknowledge receipt of all move-ups and corrections to entries. We usually respond within 2 days unless we are at a trial. Please contact us if you do not hear back in a reasonable timeframe.**

**IF YOU DO NOT HEAR BACK, WE DID NOT GET YOUR EMAIL OR ENTRY!**

## **CLASSES OFFERED**

THR: All levels of STD, JWW, FAST, & T2B plus Premier STD

FRI: All levels of STD, JWW, FAST, & T2B plus Premier JWW

Please consult AKC rules and regulations pertaining to Agility Trials for complete description and eligibility for entry in these classes. The exhibitor is fully responsible for entering the dog in the correct class/division.

## **RUNNING ORDER**

**THR & FRI**

**HIGH to LOW** (24/24C, 20, 16, 12, 8, 4)

### **THURSDAY**

Combined FAST - T2B – Prem STD – Ex/MAS STD –  
OPEN STD – NOV STD – EX/MAS JWW – OPEN JWW – NOV JWW

### **FRIDAY**

Combined FAST – T2B – Ex/MAS STD – OPEN STD – NOV STD -  
PREM JWW - EX/MAS JWW – OPEN JWW – NOV JWW

Please consult AKC rules and regulations pertaining to Agility Trials for complete description and eligibility for entry in these classes. The exhibitor is fully responsible for entering the dog in the correct class/division.

## **HEIGHT DIVISIONS**

Owners/Agents are responsible for entering the proper height divisions.

<b>REGULAR</b>	<b>PREFERRED</b>	<b>INFORMATION</b>
Exhibitors may choose to enter their dog in a higher height division than required by AKC, but not in a lower height division than the AKC mandated height.	The following jump heights shall be used in all Preferred classes.	Owners are responsible for entering their dog in the proper height division  For dogs measuring ...
8"	4"	For dogs 11 inches & under at the withers
12"	8"	For dogs 14 inches & under at the withers
16"	12"	For dogs 18 inches & under at the withers
20"	16"	For dogs 22 inches & under at the withers
24"	20"	For dogs over 22 inches at the withers
24C"	---	Dogs who measure into the 24-inch regular jump height division are not eligible to enter 24-Choice.

NOTE: Handlers whose dogs measure into the 8" through 20" regular jump height division may optionally enter in 24-Choice (24C) jump height at their discretion.

If your dog needs to be measured, check the box at the top of the entry form so that your dog is placed on the Measuring List. *It is no longer required that you submit a copy of your dog's jump height card with your entry form or show it during day of show check-in.*

**It is the exhibitor's responsibility to have their dog measured prior to running.  
Failure to do so will result in the cancellation of any qualifying scores.**

## **DOGS ELIGIBLE TO ENTER**

This trial is open to all dogs fifteen (15) months of age or older that are registered with the American Kennel Club or that have AKC Limited Registration, Purebred Alternative Listing/Indefinite Listing Privileges (PAL/ILP), an AKC Canine Partners listing number, or approved Foundation Stock Service (FSS) breeds are eligible to participate.

Dogs with a Purebred Alternative Listing/Indefinite Listing Privileges (PAL/ILP) or an AKC Canine Partners listing number must be spayed or neutered in order to compete. Wherever the word "dog" is used in these regulations it includes both sexes.

Dogs should be physically sound. Dogs that are blind shall not be eligible, and neither are bitches in season, aggressive dogs, or dogs suffering from any deformity, injury, or illness which may affect the dog's physical or mental performance. No dog shall compete if it is taped or bandaged in any way or has anything attached to it for medical purposes. Refer to Chapter 2 of the Registration and Discipline Rules for the listing of registerable breeds that may participate.

## **NOTICE TO EXHIBITORS**

The safety of the dogs is our primary concern. By entering this trial, exhibitors acknowledge that they are familiar with the rules and regulations of this sport, and that their dogs are familiar with and able to perform all obstacles safely.

It is expressly understood that the exhibitors alone are responsible for the behavior of their dogs and/or children. Any exhibitor whose dogs and/or children create unnecessary disturbances or repeatedly engage in unsafe or disruptive behavior may, at the discretion of the Event Committee, be asked to leave the show site. In such case, no refund of any entry fees will be made.

Entry fees will not be refunded in the event that the dog is absent, disqualified, excused, or barred from competition by action of the Event Committee.

No entry fee will be refunded if the trial cannot open or be completed by reason of civil disturbances, fire, an act of God, public emergency, act of a public enemy, or any other cause beyond the control of the organizing committee.

Exhibitors are responsible for being at the ring gate when it is their turn to run. No classes will be held up by a late exhibitor.

All dogs must be on leash at all times except when in the ring or when in the designated agility warm-up area. No dogs may be left tied to trees, cars, fences, etc.

Dogs under 4 months of age are not allowed at this trial.

## **REFUNDS**

**Bitches in season will not be admitted to the trial.** Any exhibitor with an entered bitch in season, on the trial date, will be refunded the entry fee, less \$12 per entered run, upon written certification from a veterinarian. Notification must be in the hands of the trial secretary no later than 30 minutes before the start time on the date of the trial.

## **OBSTACLES**

All obstacles and equipment used at this trial meet the requirements for AKC agility trials.

## **MOVE UPS**

Dogs may be moved to a higher class at the request of the owner as a result of qualifying for an agility title provided that the request is made in writing to the Trial Secretary and received no later than 6pm on Monday, October 7th.

**Day to Day move ups must be submitted in person to the trial secretary no later than 15 minutes after the last run is judged for each class (STD, JWW and FAST).**

All exhibitors should obtain a copy of the Regulations for Agility Trials by downloading them from the American Kennel Club website at <http://www.akc.org/rules/>.

## **SITE INFORMATION**

### **Reno-Sparks Livestock Event Center**

1350 N Wells Ave, Reno, NV 89512

<https://www.visitrenotahoe.com/event-venues/reno-sparks-livestock-events-center>

---

*There is no set-up on Wednesday night.*

*We will be unloading the equipment and setting up Thursday morning.*

*Details to follow in the final confirmation letter.*

---

### **Please adhere to the following rules while at the site:**

- Please be considerate of others and conserve crating space.
- No smoking within 30' of the building.
- Please do NOT walk your dogs in any area that has been mulched or landscaped to include gardens, flower beds or shrubs.
- Do not allow your dogs to relieve themselves on trashcans and/or the building.
- Flexi-Leads **MUST** be kept at the 2' **LOCKED** position when used **IN** and **NEAR** the building.
- Please pick up your trash in the bleacher area. It could be **your** dog that eats a bottle cap or piece of foil.
- **CLEAN UP AFTER YOUR DOGS and YOURSELVES!!!**
- Please be considerate of others. We would like to be invited back!

**All Violations will be referred to the Event Committee for a hearing.**

### **RV Info**

#### **RV Rentals thru – Classic Adventures**

775-825-1200

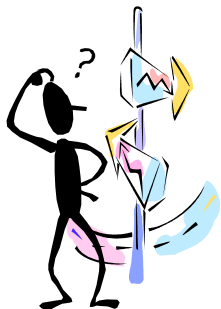
2802 Kietzke Lane, Reno, NV 89502

[www.classicadventuresrv.com](http://www.classicadventuresrv.com)

They will deliver to site, set up, dogs allowed in units.

or – Check RVShare or Outdoorsy for rentals

### **DIRECTIONS TO THE EVENT SITE**



---

From East or West

Take I-80 to Exit 14 and follow signs for Wells Ave.

Proceed north approximately 1/2 a mile to the show site.

## **HOTEL / MOTEL INFORMATION**

Please refer to the GSDCA website for direct booking links and detailed information on hotel listings:

<https://www.gsdca.org/2024-future-national-info/>

#### **Best Western Plus (renovated in 2023)**

55 E. Nugget Ave., Sparks, NV 89431 – 775-358-6811

#### **Sonesta ES Suites**

9845 Gateway Drive, Reno, NV 89521 - 775-853-8800, 800-766-3782

#### **Staybridge Suites**

10559 Professional Circle, Reno, NV 89521 - 833-221-9046

#### **Hilton Garden Inn**

9920 Double R Blvd., Reno, NV 89521 - 855-437-4340

#### **Element @ Westin**

2030 Element Lane, Reno, NV 89502 - 775-460-0312 or 775-460-0300

#### **Homewood Suites**

5450 Kietzke Lane, Reno, NV 89511 - 775-853-7100

**Hotels Contracted with GSDCA – Book Early as Reno is a tourist town! Please mention you are with the GSDCA when booking! Please note the cut off dates for reservations with the contracted hotels! Most of these hotels have a cancellation clause – check with them. Please verify pet rates and rules with your hotel.**

### **Bob Jeffers Memorial**

**The 2024 GSDCA Agility Committee honors and remembers beloved judge, competitor, club member and chief course builder Bob Jeffers.**

**We dedicate our national trials this year to his memory.**

**In true Bob-fashion, agility handlers, volunteers and enthusiasts are invited to join us for some of his favorite music and good pizza on Thursday and Friday during the trial lunch break. Hospitality provided by friends of Bob.**

**More details to follow.**

### **Entering a Mixture of Regular and Preferred Classes Within the Same Trial Weekend – Multiple Jump Heights Within the Same Trial Day**

Effective January 1, 2020, exhibitors may enter a mixture of both Regular and Preferred classes on the same trial day and/or during a trial weekend. Any mixture of Regular and Preferred classes is allowed. Please note that if a dog qualifies in Regular Master Standard and Preferred Master JWW (or vice versa) on the same trial day, then NO Double Q shall be earned toward either the MACH or PACH title. The Double Q still requires that Standard Agility and Jumpers With Weaves be either both Regular OR both Preferred on the same trial day.

Additionally, within the same Regular or Preferred classes, a dog may now be entered in multiple jump heights within the same trial day. For example, the same dog may now be entered in 20-inch Master STD/JWW while also entered in 24C-inch Premier STD/JWW on the same trial day.

**A separate entry form** must be submitted when the same dog is being entered in a mixture of Regular and Preferred and/or different jump heights within the same trial weekend thereby clearly indicating which class(es) and/or jump heights belong together for each trial day of the weekend.

### **Fix and Go On (FNG)**

Fix and Go On allows exhibitors to immediately reattempt an obstacle at any time while on course when the dog's performance of an obstacle is not to their expectation. This allows the dog to successfully complete the obstacle then finish the course or leave the ring on a positive note. Using Fix and Go On will result in a non-qualifying score. Fix and Go On is not pre-entered; rather, it occurs during the run.

### **Entering For Exhibition Only (FEO)** **GSDCA is offering FEO in all classes**

- For Exhibition Only may be offered at the option of the host club. FEO will allow exhibitors to work with their dogs in a trial environment. FEO is allowed in all classes. Participation in FEO is non-qualifying.
- FEO runs are treated as trial entries. The exhibitor must enter the class(es) prior to the closing date, pay class entry fee(s) and the Trial Secretary must record the entry in the Trial Catalog as part of the results for that class. FEO does not need to be noted on the entry form; the handler will declare the day of the show.
- Dogs may be entered in any jump height for FEO runs. If entered in an ineligible jump height, the team is committed to FEO for that run and must declare FEO on the start line. Day of show jump height changes are not allowed.
- Dogs may be entered at any level (Novice, Open Excellent or Masters) in FAST, JWW, Standard or Premier classes. If the dog is not eligible for the level entered, the team is committed to FEO for that run and must declare FEO on the start line. Day of show level changes are not allowed.
- The exhibitor must declare FEO in the ring prior to leading out to the scribe and the judge.
- Course time for FEO in Time 2 Beat, JWW, Standard, Premier and ISC will be 45 seconds. FAST courses times for each class/height are as noted in the Regulations.

#### **HOSPITAL**

**Renown Medical,**  
1155 Mill Street, Reno  
775-982-4100

**Renown Health Urgent Care  
– Ryland**  
(775) 982-5000  
975 Ryland St, Reno, NV 89502

#### **VETERINARIAN ON CALL**

##### **Vet on Call**

Klaich Animal Hospital  
1990 s. Virginia St, Reno 775-826-1212

##### **ANIMAL ER INFO**

24 Hour Animal Emergency Hospital  
  
Blue Pearl Veterinary Specialists  
555 Morrill Ave Reno, NV 89512  
775-358-8555

Exhibitors should follow their veterinarians' recommendation to assure their dogs are free from internal and external parasites, any communicable diseases, and have appropriate vaccinations.

### Prizes and Awards

All ribbons and prizes must be claimed the day of the trial; none will be mailed.

*Offered Thursday and Friday for All Breed*

Ribbons will be awarded for First through Fourth place in all divisions.

In T2B only 1st place will be awarded for each height.

Qualifying Ribbons will be awarded to all dogs receiving a qualifying score.

MACH/PACH/AGCH Ribbons will be offered.

If you are up for a Champion title, please let the trial secretary know ahead of time!

*Offered Thursday and Friday for German Shepherd Dogs only*

#### Agility Victor/Victrix Award

Danny Quest Flying Trot Sculpture

Rosette offered by the German Shepherd Club of America, Inc.

Agility Victor/Victrix will be awarded from the Regular Master Standard and Regular Master JWW classes using the following criteria:

- The dog must be entered both days of the trial
- The dog must qualify in BOTH the Regular Master Standard and the Regular Master JWW classes, therefore earning a Double Qualifier (QQ) on one or both days of the trial. Only Double Qualifiers will be used in determining the Agility Victor/Victrix.
- Double Qualifying on both days will supersede any single day QQ.
- If more than one dog earns a QQ on both days or if only a single day QQ's are earned on the same day, then the dog with the lowest combined total time for those runs will be awarded the title of Agility Victor/Victrix.
- In the event of a single day QQ's being earned on different days the dog with highest yards per second\* will be awarded the title Agility Victor/Victrix.

In the case that no dog earns a QQ on either day the award will not be given.

#### **CRITERIA FOR THE AGILITY VICTOR/VICTRIX**

In addition to the above scoring criteria the following must be met:

1. Must have an AKC Registration number (PAL/ILP dogs are not eligible)
2. Spayed/neutered dogs are acceptable.
3. **AT LEAST ONE OWNER MUST BE A MEMBER OF THE GSDCA.**
4. Dog has no disqualifying faults per breed standard.

#### **High Scoring German Shepherd and High Scoring Preferred German Shepherd Dog Award**

Rosette offered by the German Shepherd Dog Club of America, Inc.

#### **High Scoring Breed Champion of Record Award**

Rosette offered by the German Shepherd Dog Club of America, Inc.

#### **High Scoring German Shepherd in Standard with a PAL/ILP Registration Dog Award**

Rosette offered by the German Shepherd Dog Club of America, Inc.

#### **High Scoring WHITE German Shepherd Dog Award**

Rosette offered by the German Shepherd Dog Club of America, Inc.

#### **Class Trophies**

German Shepherd themed stone coasters for GSDs qualifying in 1st place

\*YPS = total yards of the courses that the QQ was earned on divided by the dog's times

### Prizes and Awards (con't)

#### GSDCA Special Awards

**High Scoring German Shepherd Dog, High Scoring Breed Champion of Record\*, High Scoring ILP/PAL German Shepherd Dog, High Scoring WHITE German Shepherd Dog and High Scoring PREFERRED German Shepherd Dog\*\*\* will be awarded from the Regular Standard classes using the following criteria:**

- The dog must be entered in Regular Standard class both days of the trial.
- The dog must qualify in a Regular Standard class on one or both days of the trial.
- Dogs qualifying both days in Regular Standard will have their two-day combined qualifying scores totaled. The dog with the highest total will win.
- In the event of a tie score, yards per second\* (YPS) will be determined for both runs. The dog that has the highest YPS average will be awarded that award that they are eligible for.
- If no dog qualifies both days, but qualifies only on one day making it still eligible, the dog with the highest score will win. If there is a tie the dog that has the highest YPS\* will be awarded that award that they are eligible for.

In the case that no eligible dog earns a qualifying score in Regular Standard in any of the levels the award(s) will not be given.

\* In order to be eligible for the High Scoring Breed Champion of Record Award, the dog must be a Champion when you sign up for the award on the first day of the trial.

\*\*\* All criteria is the same as for the High Scoring PREFERRED German Shepherd except you must be entered in the preferred class rather than the regular class to be eligible.

**GSDCA Awards will be presented on Friday at the conclusion of the judging. Dogs must earn qualifying scores to receive any special club awards.**

#### High Scoring Junior Handler

*Rosette offered by the German Shepherd Dog Club of America, Inc.*

High Scoring Jr Handler will be awarded from a combination of Regular Standard and Jumper w/Weaves classes using the following criteria:

- The dog must be entered in Regular Standard and Jumpers w/Weaves classes both days of the trial.
- The dog must qualify in at least one class on one day or the other. If a dog qualifies in both classes on the same day that will supersede a single qualifying score.
- If two dogs qualify in both classes on different days then the scores will be combined. They will still supersede a single qualifying score each day.
- If only single qualifying scores are earned both days those scores will be combined.
- Scores will be used to determine the winner. In the event there is a tie with scores the winner will be decided by the highest \*YPS average.
- If no dog qualifies in any class either day the award will not be awarded.

**Junior Handler's dogs must be owned or co-owned by the Jr Handler or by the Junior Handler's father, mother, brother, sister, uncle, aunt, grandfather or grandmother, including the corresponding step and half relations, or by a permanent member of the Jr Handler's household.**

## GSDCA Agility Top 20

The GSDCA will be recognizing the Top 20 Agility German Shepherd Dogs in both the Regular Class and Preferred Class.

The celebration of these dogs will occur after the conclusion of awards on Friday, October 11.

To receive your dog's award, you need to submit the following information:

- A copy of the AKC December 2023 Agility Invitational Report with your dog's name highlighted.
- The GSDCA Agility Top 20 Form (Next Page).
- Payment of \$30.00 payable to Karen McKee for your shirt.

### **\*\*Please NOTE:**

**You MUST mail in the form. No emails will be accepted.**

### **Trophy Donations**

THANK YOU to those who have already donated to our National trophy fund.

We are still in need of Trophy Donations for ALL VENUES, including AGILITY, as well as the General Fund. The General Fund helps to pay for all the gorgeous rosettes that are given over the course of the week.

All donor names will be listed either in the National catalog or the individual catalogs, as long as your donation reaches us by September 1, 2024. We are still able to place a memorial along with the donor's name should you choose.

We cannot thank you enough for making our national special!

#### **Gail Stiefferman, Trophy Donations Chair**

9500 Rainbow Acres, Dittmer, MO 63023

314-660-3305

[forstknoll@gmail.com](mailto:forstknoll@gmail.com)

Make checks payable to GSDCA

Or

Donate on the GSDCA website by going to

[www.gsdca.org](http://www.gsdca.org) (GSDCA Store, National Trophy Donations)

## GSDCA Agility Top 20 Form

Your Name: \_\_\_\_\_

Dog Name: \_\_\_\_\_

Shirt Size: \_\_\_\_\_

Address: \_\_\_\_\_

Phone Number: \_\_\_\_\_

Email Address: \_\_\_\_\_

Form **MUST BE** Received by: **Thursday, August 15, 2024**

### Mail In the Following:

- Copy of Dec 2023 Agility Invitation Report
- GSDCA Agility Top 20 Form
- Payment of \$30.00 payable to Karen McKee

### **Mail To:**

Karen McKee

556 N. Camp Run Road

Fombell, PA 16123

**AGREEMENT**

I certify that I am the actual owner of the dog, or that I am the duly authorized agent of the actual owner whose name I have entered. In consideration of the acceptance of this entry, I (we) agree to abide by the rules and regulations of The American Kennel Club in effect at the time of this event, and any additional rules and regulations appearing in the premium list of this event and entry form and any decision made in accord with them. I (we) agree that the club holding this event has the right to refuse this entry for cause which the club shall deem sufficient. I (we) certify and represent that the dog entered is not a hazard to persons or other dogs. In consideration of the acceptance of this entry and of the holding of this event and of the opportunity to have the dog judged and to win prizes, ribbons, or trophies, I (we) agree to hold the AKC, the event-giving club, their members, directors, governors, officers, agents, superintendents or event secretary and the owner and/or lessor of the premises and any provider of services that are necessary to hold this event and any employees or volunteers of the aforementioned parties, and any AKC approved judge, judging at this event, harmless from any claim for loss or injury which may be alleged to have been caused directly or indirectly to any person or thing by the act of this dog while in or about the event premises or grounds or near any entrance thereto, and I (we) personally assume all responsibility and liability for any such claim; and I (we) further agree to hold the aforementioned parties harmless from any claim for loss, injury or damage to this dog. Additionally, I (we) hereby assume the sole responsibility for and agree to indemnify, defend and save the aforementioned parties harmless from any and all loss and expense (including legal fees) by reason of the liability imposed by law upon any of the aforementioned parties for damage because of bodily injuries, including death at any time resulting therefrom, sustained by any person or persons, including myself (ourselves), or on account of damage to property, arising out of or in consequence of my (our) participation in this event, however such, injuries, death or property damage may be caused, and whether or not the same may have been caused or may be alleged to have been caused by the negligence of the aforementioned parties or any of their employees, agents, or any other person. I (we) agree that the determination of whether the injury is serious shall be made by the event veterinarian and is binding on me (us).

I (WE) AGREE THAT ANY CAUSE OF ACTION, CONTROVERSY OR CLAIM ARISING OUT OF OR RELATED TO THE ENTRY, EXHIBITION OR ATTENDANCE AT THE EVENT BETWEEN THE AKC AND THE EVENT-GIVING CLUB (UNLESS OTHERWISE STATED IN THIS PREMIUM LIST) AND MYSELF (OURSELVES) OR AS TO THE CONSTRUCTION, INTERPRETATION AND EFFECT OF THIS AGREEMENT SHALL BE SETTLED BY ARBITRATION PURSUANT TO THE APPLICABLE RULES OF THE AMERICAN ARBITRATION ASSOCIATION. HOWEVER, PRIOR TO ARBITRATION ALL APPLICABLE AKC BYLAWS, RULES, REGULATIONS AND PROCEDURES MUST FIRST BE FOLLOWED AS SET FORTH IN THE AKC CHARTER AND BYLAWS, RULES, REGULATIONS, PUBLISHED POLICIES AND GUIDELINES.

**INSTRUCTIONS**

Handlers may opt to enter in a higher **height division** for all **Regular** titling classes, but not in a division lower than their proper height division. Dogs entered in the **Preferred** classes **must** compete at the required jump height and **may not** compete in a jump height division **higher or lower** than their proper height division.

All dogs that have not been officially measured for an **Agility Jump Height Card** may still compete; however, they must be measured by a Judge of record, an Agility Field Representative, or a Volunteer Measuring Official, prior to running. If measured by the Judge of record, that measurement will be valid for this trial *or back-to-back trials* only. If a measurement is necessary, it is the exhibitor's responsibility to have their dog(s) measured prior to running.

Dogs listed in the **AKC Canine Partners<sup>SM</sup>** program may be eligible to enter all-breed AKC agility trials at the club's option. These dogs should be listed as All American Dog and must include their AKC number on the entry form and check the AKC No. box.

**Junior Handlers** should enter their Junior Handler number on the front of this form. Should you not have your Junior Handler number, it may be obtained from the American Kennel Club (919) 233-9767. If the Junior Handler is not the owner of the dog identified on the face of this form, what is the relationship of the Junior Handler to the Owner? \_\_\_\_\_

Emergency  
Contact: **NAME:** \_\_\_\_\_ **PHONE #:** \_\_\_\_\_

**SIGNATURE** OF OWNER OR HIS AGENT  
DULY AUTHORIZED TO MAKE THIS ENTRY \_\_\_\_\_

**TELEPHONE :** \_\_\_\_\_

**E-MAIL ADDRESS:** \_\_\_\_\_  *New Email*

**PLEASE PRINT E-MAIL ADDRESS LEGIBLY**



**All Breed AKC Agility Trials**  
Reno-Sparks Livestock Event Center  
Reno, NV

**Entry Fees: \$25/20/15/\$15/\$15**  
per run/per day (includes AKC recording fees)

**This is a separate Mixed Height Entry**

Checks payable to: **GSDCA**

Opens: Tues. 8-6-24 at 8am EST  
Closes: Tues. 9-26-24 at 6pm EST

Day	Date	STD	JWW	FAST	T2B	PREMIER	
						STD	JWW
THR	10-10						N/A
FRI	10-11					N/A	

**FIRST RECEIVED**

Mail to: Laurene Galgano,  
GSDCA Trial Secretary, PO Box 3070, Virginia Beach, VA 23454

**IMPORTANT: Carefully read instructions before filling out!**

**ENTRY FEE ENCLOSED**

**Choose Either Regular OR Preferred Classes**

*Circle one jump height -- circle class selections -- Only one selection per class (BOTH Master & Premier allowed)*

REGULAR Classes						PREFERRED Classes				
8"	12"	16"	20"	24"	24C"	4"	8"	12"	16"	20"
STD	Nov A	Nov B	Open	Ex	Master	STD	NovP	OpenP	ExP	MasterP
JWW	Nov A	Nov B	Open	Ex	Master	JWW	NovP	OpenP	ExP	MasterP
FAST	Nov A	Nov B	Open	Ex	Master	FAST	NovP	OpenP	ExP	MasterP
T2B	T2B	<b>PREMIER</b> ___STD ___JWW				T2B	T2BP	<b>PREMIER-P</b> ___STD ___JWW		

**Non-Regular Classes** International Sweepstakes \_\_\_STD \_\_\_JWW

This Dog Needs To Be Measured <input type="checkbox"/> Yes <input type="checkbox"/> No	SEX	HEIGHT AT WITHERS	CALL NAME OF DOG
BREED	VARIETY		

AKC® NAME (INCLUDE AKC TITLES ONLY)

<input type="checkbox"/> AKC® NO	Enter Complete Registration # below	DATE OF BIRTH
<input type="checkbox"/> ILP NO.		
<input type="checkbox"/> PAL NO.		PLACE OF BIRTH (LIST COUNTRY)
<input type="checkbox"/> FOREIGN REG. NO & COUNTRY		

BREEDER \_\_\_\_\_

SIRE \_\_\_\_\_

DAM \_\_\_\_\_

ACTUAL OWNERS \_\_\_\_\_

OWNERS ADDRESS \_\_\_\_\_  **New**

CITY, STATE ZIP + 4 \_\_\_\_\_

HANDLER \_\_\_\_\_ ENTER JR. HANDLER # if applicable \_\_\_\_\_

**Exhibitor or owner MUST SIGN on the signature line beneath the instructions**