



# Lexington January Agility



January 10 - 12, 2025

Virginia Horse Center – Anderson Coliseum

487 Maury River Rd., Lexington, VA 24450

This is your Final Confirmation for the Lexington January Agility trials on Jan. 10-12, 2025 in Lexington, VA. These trials are hosted by the Dog Owners Training Club of Lynchburg, Inc. Please review the confirmation information and notify me by email or mail immediately of any changes or modifications that need to be made. Please check our website:

[www.GoneDogginAgility.com](http://www.GoneDogginAgility.com) for additional trial info and a link for Volunteer sign up.

**PLEASE READ RIGHT AWAY**

**Esp. Class and Jump Ht**

Corrections must be made by 1-3-25

## **Show N Go** Thursday 1-5pm

Email Dorothy, [DSSB24@gmail.com](mailto:DSSB24@gmail.com), by 1/6 for a discount 3 runs for \$25

Or signup by 4:30pm at the site for \$10/run

For more information download the Match form from the GoneDoggin' Website

**Thursday Setup** – Building will be available at noon for exhibitor setup. The center will open at 7 am all days for exhibitors.

**PARKING:** Please park directly across from the Anderson Coliseum on Friday. The Horse Center is open for regular business and the employees park in the parking lots next to the offices.

## **TRIAL SITE**

These agility trials will be held in an indoor arena on a sand/clay surface. There is plenty of room for crating and lots of grassy areas for walking dogs. Remember that this is a horse facility. Please be careful and keep your dogs on leash. The club does not want to excuse people from the trial for causing problems around the horses.

- No personal crates on the ground floor. Handicapped crating and seating on floor or designated room only with approval of Trial Chair.
- Personal chairs will be allowed on the floor as long as they are against the wall in designated locations.
- Crates may be left overnight; however, DOTC and the Virginia Horse Center will not be responsible for any lost or damaged items left at the show site.
- Please be considerate of others and conserve crating space. Please leave aisle ways clear or we will have to move you.
- Please do NOT walk your dogs in any area that has been mulched or landscaped to include gardens, flower beds or shrubs.
- Do not allow your dogs to relieve themselves on trashcans and/or the building.
- Flexi-Leads **MUST** be kept at the 2' **LOCKED** position when used **IN** and **NEAR** the building.
- High occupancy X-Pens ARE allowed.
- A full service concession stand is available on site.
- **Exhibitors are responsible** for cleaning up after their dog(s). Any exhibitor failing to do so may be excused without benefit of refund if the Event Committee deems the exhibitor to be in violation of this requirement. Cleaning supplies and disposal sites will be available at various locations around the show grounds.
- Please download a copy of the Virginia Horse Center rules/regulations from the GoneDoggin' website.

**All Violations will be referred to the Event Committee for a hearing.**

## **CHECK-IN and MEASURING**

We will not be using Armband labels at these trials. However, you will need to know your Armband number in order to do an At Trial move-up. Please bring a printed or an electronic copy of your trial confirmation so you will have your armband number with you.

We will have three Volunteer Measuring Officials (VMOs) at our trials. All dogs needing to be measured must be measured by a VMO prior to running. Please allow sufficient time before your first run to be measured. Please remember that our VMOs are "**Volunteers**"!

**DO NOT RISK A Q – GET MEASURED BEFORE RUNNING**

## **MOVE-UPS**

Move-ups must be received by the Trial Secretary in writing (e-mail preferred) prior to 6pm on Monday, January 6, 2025.

Be sure that I have acknowledged receipt of your move-up. Please preface all correspondence with "**LEX-JAN**" in the Subject line. **Day to Day move ups must be submitted in person to the trial secretary no later than 15 minutes after the last run is judged for each class (STD, JWW & FAST).**

## **VOLUNTEERS**

An estimated timeline and the Worker Sign up link will be available soon on the GoneDoggin' website, [www.GoneDogginAgility.com](http://www.GoneDogginAgility.com). Contact Judy Smotrel, [jsmotrel@prodigy.net](mailto:jsmotrel@prodigy.net), if you have any problems signing up. Workers will receive a Raffle ticket for each class worked and a voucher that can be used towards a future entry or at the Concession stand.

**JUDGES**

Alex Davis #95324..... Ashland, VA  
 Terry Elger # 19262..... Milwaukee, WI

**RUNNING ORDER & SCHEDULE**

Judge’s briefings will be at the beginning of each class – **NOT** before each jump height.

Friday LOW to HIGH Except for Ex/MAS JWW 20/24", 4-12", 16"	
<b>Ring 1</b> 8:30 am Start Briefing 8:10am <b>TERRY</b>	<b>Ring 2</b> 9:30 am Start Briefing 9:10am <b>ALEX</b>
EX/MAS FAST	T2B
OPN/NOV FAST	NOV JWW
PREM STD	OPEN JWW
EX/MAS STD	EX/MAS JWW 20/24", 4-12", 16"
OPN STD	
NOV STD	PREM JWW

Saturday LOW to HIGH Except for Ex/MAS JWW 20/24", 4-12", 16"	
<b>Ring 1</b> 8:30am Start Briefing 8:10am <b>ALEX</b>	<b>Ring 2</b> 9:30am Start Briefing 9:10am <b>TERRY</b>
EX/MAS FAST	T2B
OPN/NOV FAST	NOV JWW
PREM STD	OPN JWW
EX/MAS STD	EX/MAS JWW 20/24", 4-12", 16"
OPN STD	
NOV STD	PREM JWW

Sunday HIGH to LOW	
<b>Ring 1</b> 9am Start Briefing 8:40am <b>TERRY</b>	<b>Ring 2</b> 8:30 am Start Briefing 8:10am <b>ALEX</b>
PREM STD	T2B
EX/MAS STD	NOV JWW OPEN JWW
OPN STD	EX/MAS JWW
NOV STD	PREM JWW

Please be sure to check the Ring START times daily as they are different to accommodate the classes

**Ex/MAS FAST** WALK/RUN  
**OPN / NOV FAST** Brief & Walk together  
 Run combined by Jump Height  
**T2B** WALK/RUN

**EX/MAS STD and EX/MAS JWW**  
 walkthrus will be split as follows:

**4"- 12"** WALK/RUN  
**16"** WALK/RUN  
**20" – 24C"** WALK1 – WALK2 – RUN ALL

**NOTE:** When classes have 2 walk groups, there will be no 5 minute break until the first dog.  
**This will be clearly marked on Agility Gate.**

**If you think you will miss your scheduled walkthru due to a conflict, walk with an EARLIER jump height!**

For those with conflicts, you are asked to please walk the courses with an EARLIER height group if the conflict would mean you can't walk with your height class. You can also run at the end of the earlier height group or at the beginning of your height group instead of at the end. **All conflicts must be approved by the judge.**

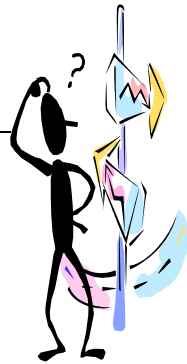
We realize that handlers with multiple dogs will have some conflicts.  
 Please be sure to mark and/or notify the Gate stewards in **BOTH RINGS** that you have a possible conflict.

## **DIRECTIONS TO THE EVENT SITE**

### **Virginia Horse Center – Anderson Coliseum**

487 Maury River Rd., Lexington, VA 24450

[www.vahorsecenter.org](http://www.vahorsecenter.org)



#### **From the North:**

- Take I-81 South to Exit 191
- Proceed on I-64 West towards Lexington for ½ mile to Exit 55.
- Turn right on Rt. 11 North. Immediately turn left on Rt. 39 West
- The Virginia Horse Center is one mile ahead on the left.

#### **From the South:**

- Take I-81 North to Exit 191
- Follow directions above

#### **From the East:**

- Take I-64 West toward Lexington
- Follow directions above

#### **From the West:**

- Take I-64 East toward Lexington
- Follow directions above

## **Trial Information and Rules**

- **Check-In** – We will be using Agility Gate – there will not be paper gate sheets. There will be a “display” iPad by the ring for exhibitors to look at or check-in without needing their personal devices by the rings.
- **Bring your phone down** to the ring so you can follow along on Agility Gate and then leave it on the treat table to run. Change your lock screen to your picture of your dog/yourself to make any lost phones easier to return!
- **Course maps** – The course maps will be posted by the wall of each ring for exhibitors to take pictures on their phone. Maps will also be available on Agility Gate.
- **Ribbons** will be available for self-serve pick-up. **Trial results** will be posted on the wall near hospitality.

## **AGILITY GATE APP**

We will be using the Agility Gate app. This allows exhibitors to check in for their runs through the app and to follow along by looking at the gate sheets as dogs are crossed off when they run. To use the Agility Gate app, please download it from the Apple App Store or the Google Play Store. **Please keep in mind that this app is only an aid.** Exhibitors are still responsible for arriving on time for their walk-thrus and runs.

Using Agility Gate you can:

- Check in your dog / Mark your dog ABSENT / Mark a CONFLICT
- Follow in real time to see who is running in the ring using the running order. On the app you can see as the gate steward marks each dog on the line the same way you would see it on the paper gate sheets. You will be able to see the whole gate sheet to know how many dogs before your run or how many dogs are left in that class. Visit: <http://agilitygate.com> before the trial to see how it works.
- Download the course maps \*posting time is dependent on the schedule of the app developer\*

**\* The Agility Gate code is 1548 \***

## **VETERINARIAN EMERGENCY SERVICES**

### **Shenandoah Valley Regional Veterinary Emergency Services**

465 Lee Highway, Verona, VA 24482 (Do not use this address for a GPS)

(540) 248-1051

Hours: Friday 6 PM to 8 AM, SAT noon to 8 AM Monday.

## **VETERINARIAN ON CALL**

### **Blue Ridge Animal Hospital**

133 Maury River Rd., Lexington, VA 24450

(540) 463-7799

FRI: 8am – 6pm SAT: 8am – 1pm

## **EMERGENCY SERVICES**

Fire/Ambulance/Police

Lexington City

911

Please feel free to contact us should you need anything further. We look forward to seeing you and wish everyone safe travel and clean runs!

**Laurene & Jenn Galgano, Lexington Trial Secretary**  
 PO Box 3070, Virginia Beach, VA 23454  
 E-Mail: [GoneDoggin@cox.net](mailto:GoneDoggin@cox.net) (757) 343-8538 -Cell

## GoneDoggin' Website

(For updated Trial Information, Estimated Timeline,  
 Worker Schedule Link)

**[www.GoneDogginAgility.com](http://www.GoneDogginAgility.com)**

## Lexington January Agility Trial Statistics January 10 - 12, 2025

This is a preliminary judging schedule which is contingent upon the move-up of entries that may not have been received. Final numbers may differ as the chart below is created before the final closing of move ups

*(Data does not reflect any move ups received after January 2nd)*

Friday, January 10 <sup>th</sup>								
STANDARD	4"	8"	12"	16"	20"	24"	24C"	Total
NOVICE	0	0	2	5	4	1	0	12
OPEN	0	1	2	4	4	1	0	12
EX/MAS	1	17	25	30	46	8	0	127
PREMIER	1	3	9	7	16	1	0	37
JUMPERS	4"	8"	12"	16"	20"	24"	24C"	Total
NOVICE	0	0	0	6	5	1	0	12
OPEN	0	1	5	3	7	1	0	17
EX/MAS	1	17	25	30	45	8	0	126
PREMIER	0	2	6	6	9	0	0	23
FAST	4"	8"	12"	16"	20"	24"	24C"	Total
NOVICE	0	1	4	2	4	2	0	13
OPEN	0	1	0	3	5	0	0	9
EX/MAS	2	7	5	12	14	2	0	42
T2B	4"	8"	12"	16"	20"	24"	24C"	Total
REG & PREF	1	4	8	10	14	2	0	39
<b>Total Runs Saturday: 469</b>								

Saturday, January 11 <sup>th</sup>								
STANDARD	4"	8"	12"	16"	20"	24"	24C"	Total
NOVICE	0	2	2	4	9	2	0	19
OPEN	0	0	4	4	5	1	0	14
EX/MAS	2	17	26	44	56	10	1	156
PREMIER	0	3	8	11	17	3	1	43
JUMPERS	4"	8"	12"	16"	20"	24"	24C"	Total
NOVICE	0	2	0	5	8	2	0	17
OPEN	0	0	6	4	8	1	0	19
EX/MAS	2	17	26	44	55	10	1	155
PREMIER	1	1	8	6	14	1	1	32
FAST	4"	8"	12"	16"	20"	24"	24C"	Total
NOVICE	0	1	5	2	5	3	0	16
OPEN	0	1	2	4	6	0	0	13
EX/MAS	1	5	9	14	19	4	1	53
T2B	4"	8"	12"	16"	20"	24"	24C"	Total
REG & PREF	1	3	4	13	16	4	0	41
<b>Total Runs Saturday: 578</b>								

Sunday, January 12 <sup>th</sup>								
STANDARD	4"	8"	12"	16"	20"	24"	24C"	Total
NOVICE	0	1	2	2	8	1	0	14
OPEN	0	0	3	3	5	0	0	11
EX/MAS	0	11	23	33	48	10	1	126
PREMIER	1	2	6	6	13	2	1	31
JUMPERS	4"	8"	12"	16"	20"	24"	24C"	Total
NOVICE	0	2	0	3	7	1	0	13
OPEN	0	0	7	2	8	0	0	17
EX/MAS	0	10	21	33	46	10	1	121
PREMIER	0	0	4	3	5	1	1	14
T2B	4"	8"	12"	16"	20"	24"	24C"	Total
REG & PREF	1	4	4	11	20	4	0	44
<b>Total Runs Sunday: 391</b>								